

Evaluation Screening Report

No.: ETR25A04596

Date: 14-Nov-2025

Page: 1 of 3

ESCORT SEAL CO., LTD.

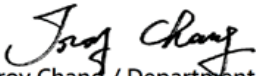
NO. 22, BEIYUAN RD., ZHONGLI DIST., TAOYUAN CITY 32063, TAIWAN


The following sample(s) was/were submitted and identified by the applicant as:

Sample Submitted By : ESCORT SEAL CO., LTD.
Sample Name : S2J01B+S3J01B+S3J11B+S4J01B+S4J01U+S4J11B+S4J11U+S4J42B+S4J44B+S5J01B+S5J01N+S5J11B+S5J11U+S5J44B+S5J45B+S5J49B+S6J01A+S6J01B+S6J01G+S6J01M+S6J01N+S6J01U+S6J01Y+S6J11A+S6J11B+S6J11G+S6J11U+S6J11Y+S6J44G+S6J49B+S6J49G+S7J01B+S7J01U+S7J11B+S8J01B+S8J01G+S8J11G
Material No. : S3001B+S4001B+S4011B+S5001B+S5001U+S5011B+S5011U+S5042B+S5044B+S6001B+S6001N+S6011B+S6011U+S6044B+S6045B+S6049B+S7001A+S7001B+S7001G+S7001M+S7001N+S7001U+S7001Y+S7011A+S7011B+S7011G+S7011U+S7011Y+S7044G+S7049B+S7049G+S8001B+S8001U+S8011B+S9001B+S9001G+S9011G

Sample Receiving Date : 29-Oct-2025
Testing Period : 29-Oct-2025 to 11-Nov-2025

Service Requested : As requested by client, a chemicals evaluation screening is performed by statistical coupling with semi-quantitative screening according to RSTS-E&E-CP65-001. Screening covers substances relevant for the tested product based on chemicals known to cause cancer or reproductive toxicity issued by the State of California environmental protection agency Office of Environmental Health Hazard Assessment safe drinking water and toxic enforcement act of 1986.


Troy Chang / Department Manager
Signed for and on behalf of
SGS TAIWAN LTD.
Chemical Laboratory - Taipei



PIN CODE: A154BE4B

This document is issued by the Company subject to its General Conditions of Service printed overleaf, available on request or accessible at <https://www.sgs.com.tw/terms-of-service> and, for electronic format documents, subject to Terms and Conditions for Electronic Documents at <https://www.sgs.com.tw/terms-of-service>. Attention is drawn to the limitation of liability, indemnification and jurisdiction issues defined therein. Any holder of this document is advised that information contained hereon reflects the Company's findings at the time of its intervention only and within the limits of client's instruction, if any. The Company's sole responsibility is to its Client and this document does not exonerate parties to a transaction from exercising all their rights and obligations under the transaction documents. This document cannot be reproduced, except in full, without prior written approval of the Company. Any unauthorized alteration, forgery or falsification of the content or appearance of this document is unlawful and offenders may be prosecuted to the fullest extent of the law. Unless otherwise stated the results shown in this test report refer only to the sample(s) tested.

Evaluation Screening Report

No.: ETR25A04596

Date: 14-Nov-2025

Page: 2 of 3

ESCORT SEAL CO., LTD.

NO. 22, BEIYUAN RD., ZHONGLI DIST., TAOYUAN CITY 32063, TAIWAN

Remark :

- (1) The chemical screening of specified Proposition 65 list is performed by means of currently available analytical techniques against relevant substances for the tested product based on Proposition 65 related documents published by Office of Environmental Health Hazard Assessment (OEHHA):
<https://oehha.ca.gov/proposition-65/proposition-65-list>
 These lists are under evaluation by OEHHA and may subject to change in the future.
- (2) Product and/or BOM review for high risk material identification and selection of screening test for high risk chemicals are conducted based on SGS database.
- (3) The screening test of the substances were performed by applicable standard methods and/or SGS In-House method - Analyzed by ICP-OES, GC-MS, UV-VIS, HPLC-DAD, HPLC-MS.
- (4) The evaluation screening is conducted on accessible parts of the product. In case the assessed product would generate heat or air ventilation during use, VOC screening test against the Proposition List is performed at product level based on actual use scenario.

Details on Evaluation Screening

Unit : mg/kg

Part No.	Part Description	Detected Prop 65 Listed substance	MDL	Result
1.	MIXED ALL PARTS	All tested prop 65 substances	-	n.d.

Note :

1. mg/kg = ppm ; 0.1wt% = 0.1% = 1000ppm
2. MDL = Method Detection Limit
3. n.d.= not detected = lower than MDL, n.d. is denoted on the Proposition 65 listed substance.
4. "-" = Not Regulated
5. Test result that shown as per test group is the actual concentration from laboratory testing. The test result is calculated by minimum sample weight.
6. The sample(s) was/were analyzed on behalf of the applicant as mixing sample in one testing. The above result(s) was/were only given as the informality value.

This document is issued by the Company subject to its General Conditions of Service printed overleaf, available on request or accessible at <https://www.sgs.com.tw/terms-of-service> and, for electronic format documents, subject to Terms and Conditions for Electronic Documents at <https://www.sgs.com.tw/terms-of-service>. Attention is drawn to the limitation of liability, indemnification and jurisdiction issues defined therein. Any holder of this document is advised that information contained hereon reflects the Company's findings at the time of its intervention only and within the limits of client's instruction, if any. The Company's sole responsibility is to its Client and this document does not exonerate parties to a transaction from exercising all their rights and obligations under the transaction documents. This document cannot be reproduced, except in full, without prior written approval of the Company. Any unauthorized alteration, forgery or falsification of the content or appearance of this document is unlawful and offenders may be prosecuted to the fullest extent of the law. Unless otherwise stated the results shown in this test report refer only to the sample(s) tested.

Evaluation Screening Report

No.: ETR25A04596

Date: 14-Nov-2025

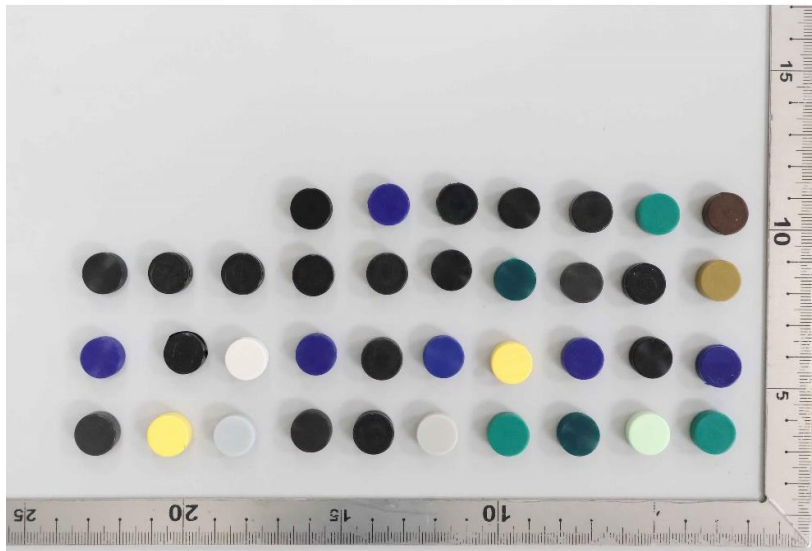
Page: 3 of 3

ESCORT SEAL CO., LTD.

NO. 22, BEIYUAN RD., ZHONGLI DIST., TAOYUAN CITY 32063, TAIWAN

* The tested sample / part is marked by an arrow if it's shown on the photo. *

ETR25A04596



** End of Report **

This document is issued by the Company subject to its General Conditions of Service printed overleaf, available on request or accessible at <https://www.sgs.com.tw/terms-of-service> and, for electronic format documents, subject to Terms and Conditions for Electronic Documents at <https://www.sgs.com.tw/terms-of-service>. Attention is drawn to the limitation of liability, indemnification and jurisdiction issues defined therein. Any holder of this document is advised that information contained hereon reflects the Company's findings at the time of its intervention only and within the limits of client's instruction, if any. The Company's sole responsibility is to its Client and this document does not exonerate parties to a transaction from exercising all their rights and obligations under the transaction documents. This document cannot be reproduced, except in full, without prior written approval of the Company. Any unauthorized alteration, forgery or falsification of the content or appearance of this document is unlawful and offenders may be prosecuted to the fullest extent of the law. Unless otherwise stated the results shown in this test report refer only to the sample(s) tested.